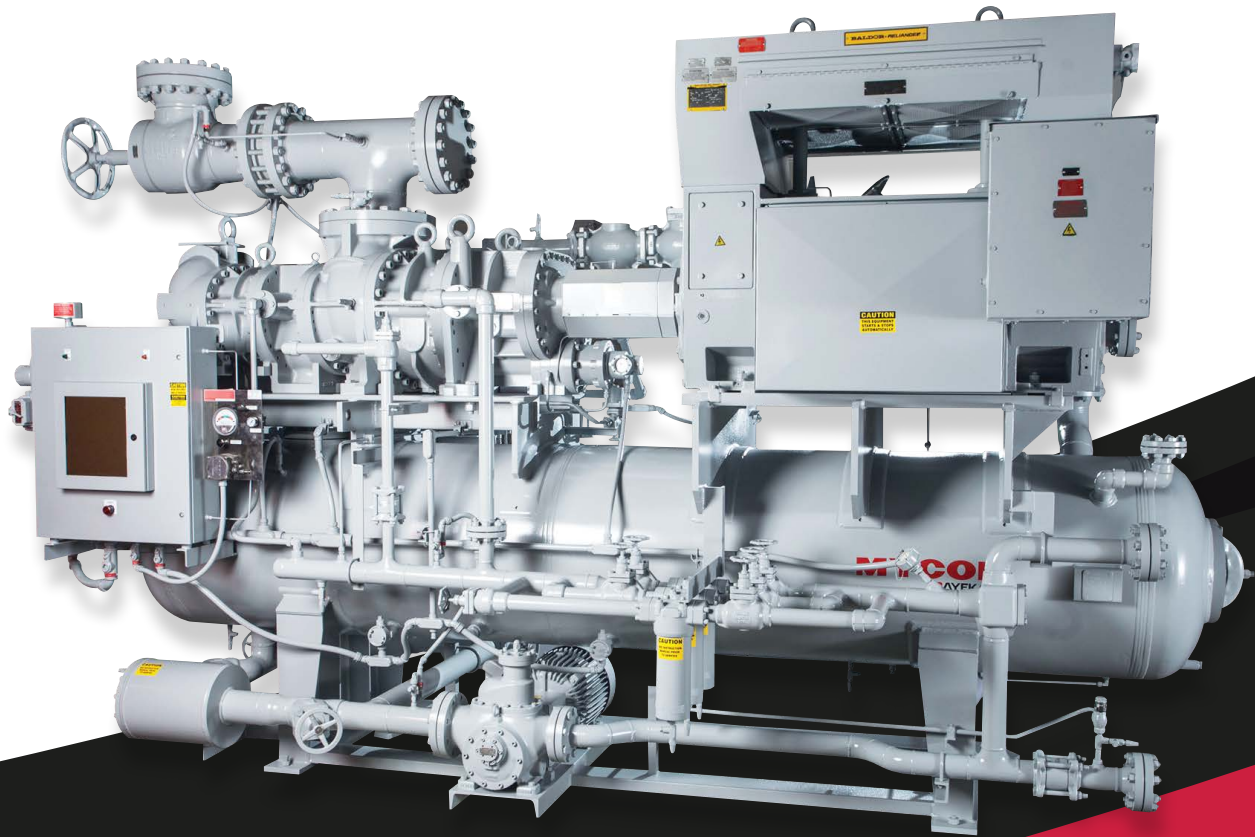


C

MAYEKAWA
MYCOM

Series

Screw Compressor Package



**Two Stage
Open Type**

<https://mayekawa.com/americas/mna>

C

Series

C-Series Screw Compressor Package

Compound screw compressor package

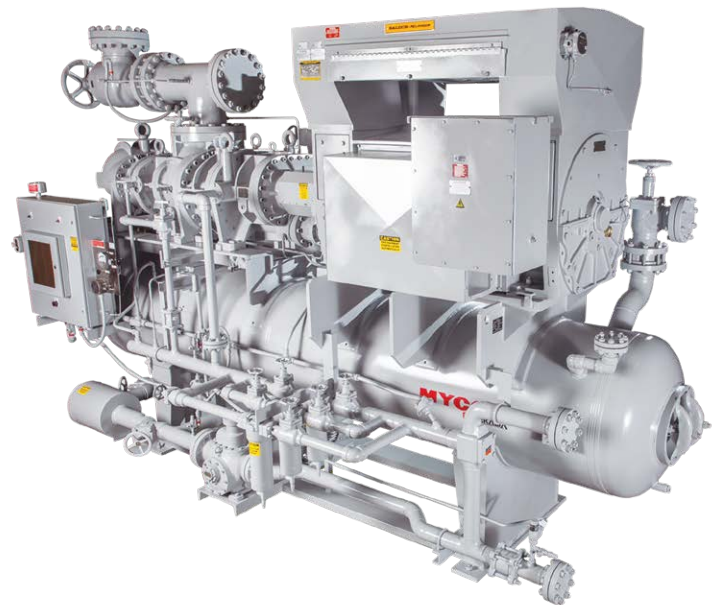
TWO-STAGE REFRIGERATION SYSTEM IN ONE COMPRESSOR PACKAGE

The MYCOM C-Series compressor gives users the energy benefit of a two-stage system in a single, integrated package. The inherent design advantage of the C-Series package allows for a reduction of total ownership cost.

Traditional two-stage refrigeration systems require two compressors, motors, and oil separators. They also require auxiliary equipment like an intercooler and all the interconnecting piping and valves required to connect to all the components. The MYCOM C-Series compressor only uses one increased space requirement.

PRODUCT HIGHLIGHTS

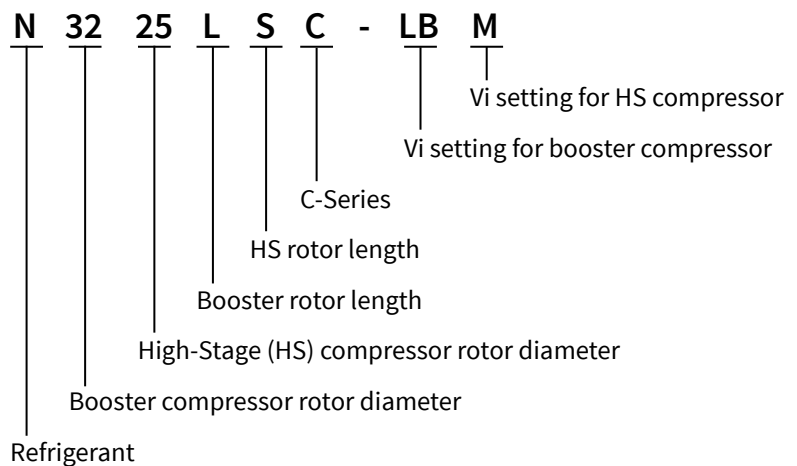
- Low temperature compression to -76F (-62C) in a single package
- 203-8, 120 CFM compressor swept volume
- ~18-875 TR capacity range (at -40/95F)
- 30-3000HP motor sizes
- Over 50 possible model combinations to meet any need.



DESIGN CONCEPT

The C-Series integrates a two-stage refrigeration system into a single, compact package. A single compressor housing and integrated package reduces first cost, installation cost and maintenance cost for an economical and energy efficient package.

Compound C-Series compressors are suitable for low temperature applications where energy savings is important and space is at a premium. The C-Series compressor is suitable for Ammonia and Freon applications.



MYPRO TOUCH+

The next generation MYPRO TOUCH+ control panel is designed to maximize the performance of your MYCOM compressor package. The new touch screen interface boasts a revised control designed to minimize learning curve of a new control panel.

Standard Features

- USB connection
- Ethernet connectivity
- Modbus RTU protocol with standard remote control capabilities
- Password protection
- Available SD card storage
- Expandable system control
- Ethernet Protocol for AB CompactLogix and MicroLogix processors (default)

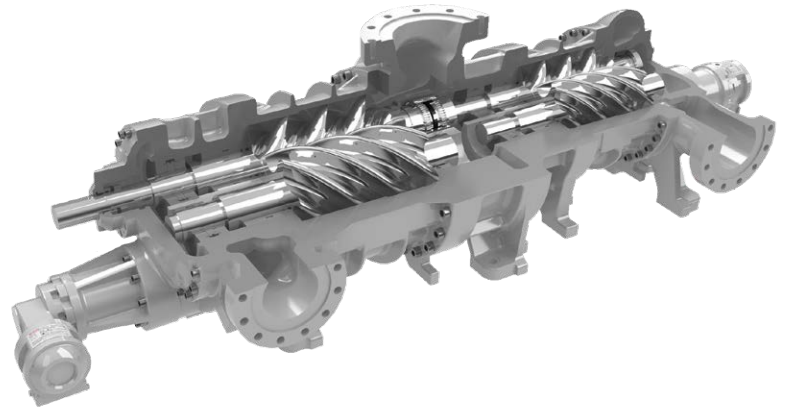
Optional Features

- Main status set points monitor available at any controller screen
- SSR I/O switch type
- Real time and Historical trending
- Programmable ID for optional analog inputs
- Calibration menu
- Class I, Div.2 option available
- Quick menu setpoint access



SIZE CHART

| Models | Speed (RPM) | Displacement (CFM) | |
|------------|-------------|--------------------|------------|
| | | Low stage | High stage |
| 1610SLC-62 | 2610* | 215 | 79 |
| 1610SLC-63 | 3160* | 260 | 96 |
| 1610SLC-64 | 3870* | 317 | 118 |
| 1612SLC | 3550 | 294 | 139 |
| 1612LLC | 3550 | 441 | 210 |
| 2016SSC | 3550 | 574 | 294 |
| 2016MSC | 3550 | 718 | 294 |
| 2016LSC | 3550 | 859 | 294 |
| 2520SSC | 3550 | 1120 | 574 |
| 2520SLC | 3550 | 1120 | 859 |
| 2520MSC | 3550 | 1400 | 574 |
| 2520LSC | 3550 | 1670 | 574 |
| 2520LMC | 3550 | 1670 | 718 |
| 3225SSC | 3550 | 2250 | 1120 |
| 3225MSC | 3550 | 2800 | 1120 |
| 3225LSC | 3550 | 3350 | 1120 |
| 3225LLC | 3550 | 3350 | 1670 |
| 4032SSC | 3550 | 4590 | 2250 |
| 4032SLC | 3550 | 4950 | 3550 |
| 4232MSC | 3550 | 5770 | 2250 |
| 4032MLC | 3550 | 5770 | 3350 |
| 4032LSC | 3550 | 6890 | 2250 |
| 4032LLC | 3550 | 6890 | 3350 |
| 4032LLSC | 3550 | 8120 | 2250 |
| 4032LLLLC | 3550 | 8120 | 3970 |



MAYEKAWA USA, INC.
<https://mayekawa.com/americas/mna>

Tel: +1 (615) 773-2859
 24 Hr Service: +1 (800) 836-9266
 Email: info@mayekawausa.com

MAYEKAWA CANADA, INC.
<https://mayekawa.com/americas/mna>

Vancouver: +1 (604) 270-1544
 Calgary: +1 (403) 250-1554
 Toronto: +1 (905) 564-0664



* The information contained herein is for reference only. Subject to change without notice.
 Part No. MKT00005 Rev. 2